



M+B

**KENRICK MCFARLANE**  
*META*

July 7 – August 12, 2023

612 NORTH ALMONT DRIVE, LOS ANGELES, CA 90069

TEL 310 550 0050

[WWW.MBART.COM](http://WWW.MBART.COM)

[INFO@MBART.COM](mailto:INFO@MBART.COM)

[@MBLOSANGELES](https://www.instagram.com/MBLOSANGELES)





# KENRICK MCFARLANE

## *META*

July 7 – August 12, 2023

**M+B** is pleased to present *META*, an exhibition of new works by Kenrick McFarlane. This is the artist's second solo show with the gallery. The exhibition opens on July 7 and will run through August 12, 2023, with an opening reception on Friday, July 7, from 6 to 9 pm.

At the heart of Kenrick McFarlane's work lies a profound exploration of representation, power dynamics, archetypes, and relationships. In *META*, male and female figures come together in psychologically-charged dreamlike sequences. These enigmatic scenes and figures engage in a complex negotiation with the viewer, erecting barriers that restrict the extent of our voyeuristic gaze, serving as conduits for the ways in which the mind processes the world and how it reconciles with one's own fantasies, suppressed desires, and unsettling thoughts.

In this new body of work, Kenrick McFarlane delves into the tradition of painting, exploring conventional genres and subjects such as the portrait, the flaneur, and the female nude, infusing the paintings with a sense of bewilderment and unease. McFarlane presents female figures with voluptuous, often exaggerated forms. Some are inspired by popular anime characters while others resemble Instagram models. The presence of eroticism permeates not only through the deliberate poses of these figures, but also in a color palette that bears the imprint of Francis Bacon's influence. The artist mixes and layers a wide spectrum of painting styles and symbols, engaging with the creative histories that inform his work, from Edouard Manet to John Currin to contemporary trap culture.

For McFarlane, the act of painting is a meditative process – he allows his thoughts, longings, and emotions to guide his visual language. Rather than meticulously planning compositions, his paintings emerge from the dynamic flow of the creative process. Figurative elements frequently blur and dissolve, gradually transitioning into complete abstraction, intentionally defying a singular interpretation. His paintings are not detached observations; they are painterly extrapolations marked by a sense of personal implication, as a Black artist navigating complex social climates and conversing with art history. These works elicit a visceral reaction, and in their intentional ambiguity they provoke a contemplative engagement that defies easy resolution.

**Kenrick McFarlane** (b. 1990, Chicago) received his BFA from the School of Art Institute of Chicago and studied in the MFA program at University of California, Los Angeles. Recent solo exhibitions include *Naked & Famous*, M+B, Los Angeles; *ANIMA*, Gallery MOMO, Johannesburg, South Africa; and *Recent Paintings*, ORNOT Gallery, Chicago. McFarlane's work was also recently exhibited as a part of *Dwelling* at Canal Projects, New York; *A Love Letter to LA* at Phillips Gallery, Los Angeles; *27 Young Americans* at PM/AM Gallery, London, UK; *SKIN MASKS* at Kavi Gupta Gallery, Chicago; and *Shattered Glass* at Jeffrey Deitch Gallery, Los Angeles. McFarlane has a forthcoming exhibition with Galerie Peter Kilchmann in 2023. Kenrick McFarlane lives and works in Los Angeles, CA.



## KENRICK MCFARLANE

Kenrick McFarlane's paintings dwell in moments of tense contradiction, negotiating the gaps between the private and public self, vulgarity and beauty. His works exude a psychological intensity—wide-eyed gazes disrupt swirls of miasmic color; faces are obscured by wisping masks, as if each figure is caught in a dreamlike stream of consciousness. McFarlane passionately converses with the creative histories with which he paints through, which stretch from German Expressionism to trap. However, his paintings are not the distanced observations of a documentarian, but rather painterly extrapolations marked by a sense of personal implication – McFarlane lives within these same registers, working as a Black artist, conversing with art history, navigating complex sexual climates.

**Kenrick McFarlane** (b. 1990, Chicago) received his BFA from the School of Art Institute of Chicago and studied in the MFA program at University of California, Los Angeles. Recent solo exhibitions include *Naked & Famous*, M+B, Los Angeles; *ANIMA*, Gallery MOMO, Johannesburg, South Africa; and *Recent Paintings*, ORNOT Gallery, Chicago. McFarlane's work was also recently exhibited as a part of *Dwelling* at Canal Projects, New York; *A Love Letter to LA* at Phillips Gallery, Los Angeles; *27 Young Americans* at PM/AM Gallery, London, UK; *SKIN MASKS* at Kavi Gupta Gallery, Chicago; and *Shattered Glass* at Jeffrey Deitch Gallery, Los Angeles. McFarlane has a forthcoming exhibition with Galerie Peter Kilchmann in 2023. Kenrick McFarlane lives and works in Los Angeles, CA.



**Kenrick McFarlane** | *I Get Those Goosebumps Everytime*, 2023 | oil on canvas  
72 x 60 inches (182.9 x 152.4 cm) | (KMCF.23.008.72)







**Kenrick McFarlane**

*I Get Those Goosebumps Everytime*, 2023  
(detail)





**Kenrick McFarlane** | *Portrait Study of a High Value Male*, 2023 | oil on canvas  
72 x 48 inches (182.9 x 121.9 cm) | (KMCF.23.015.72)





**Kenrick McFarlane**  
*Portrait Study of a High Value Male, 2023*  
(detail)





**Kenrick McFarlane** | *Theaster's Final Warning*, 2023 | oil on canvas  
72 x 60 inches (182.9 x 152.4 cm) | (KMCF.23.007.72)





**Kenrick McFarlane**  
*Theaster's Final Warning*, 2023  
(detail)





**Kenrick McFarlane** | *Princess Mononoke*, 2023 | oil on canvas  
30 x 24 inches (76.2 x 61 cm) | (KMCF.23.017.30)





**Kenrick McFarlane**  
*Princess Mononoke*, 2023  
(detail)





**Kenrick McFarlane** | *The Asylum*, 2023 | oil on canvas  
72 x 60 inches (182.9 x 152.4 cm) | (KMCF.23.006.72)





**Kenrick McFarlane**  
*The Asylum*, 2023  
(detail)





**Kenrick McFarlane** | *The New Manga*, 2023 | oil on canvas  
72 x 48 inches (182.9 x 121.9 cm) | (KMCF.23.016.72)

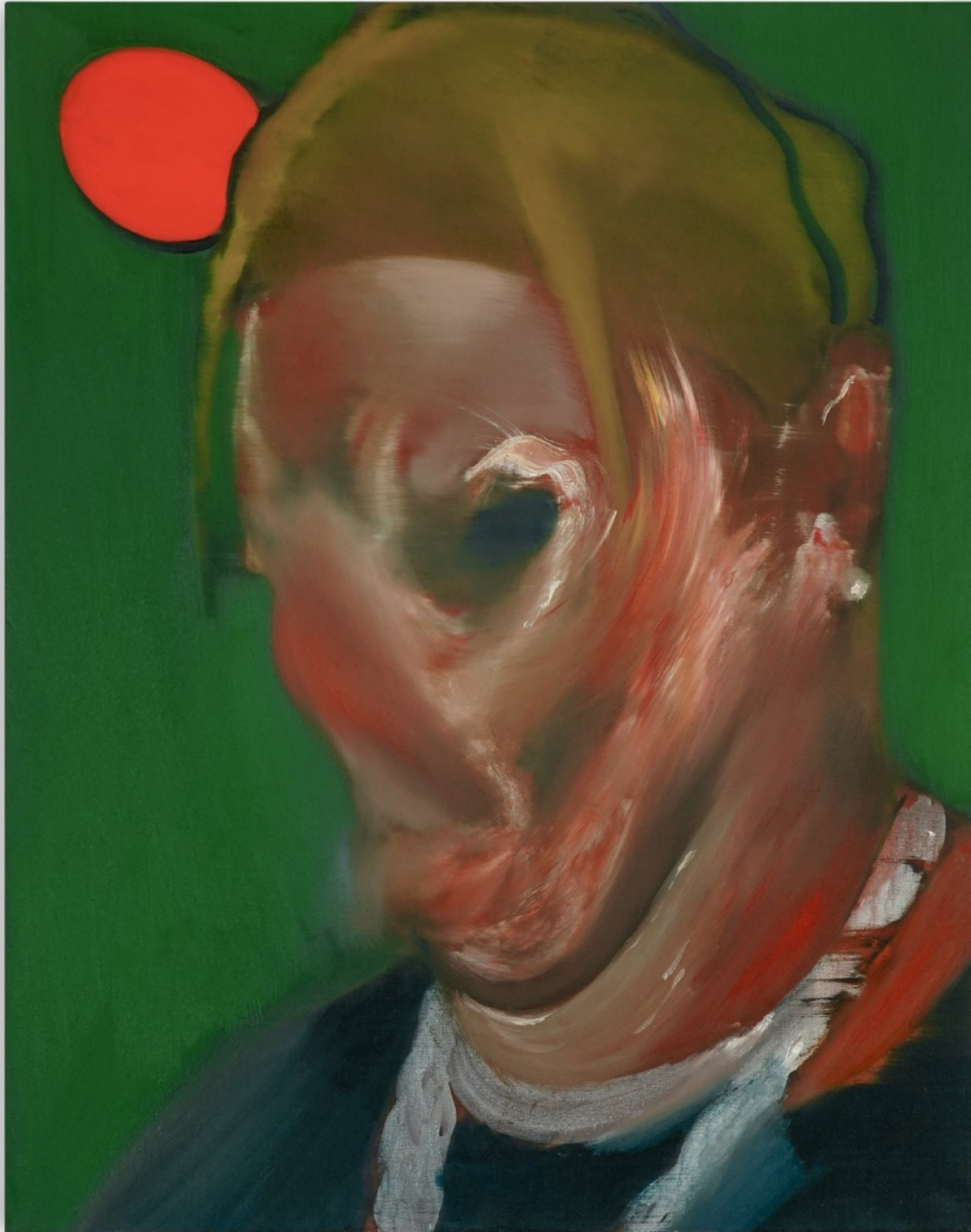




**Kenrick McFarlane**  
*The New Manga, 2023*  
(detail)



M+B



**Kenrick McFarlane** | *A Love Letter to Travis II*, 2023 | oil on canvas  
30 x 24 inches (76.2 x 61 cm) | (KMCF.23.018.30)



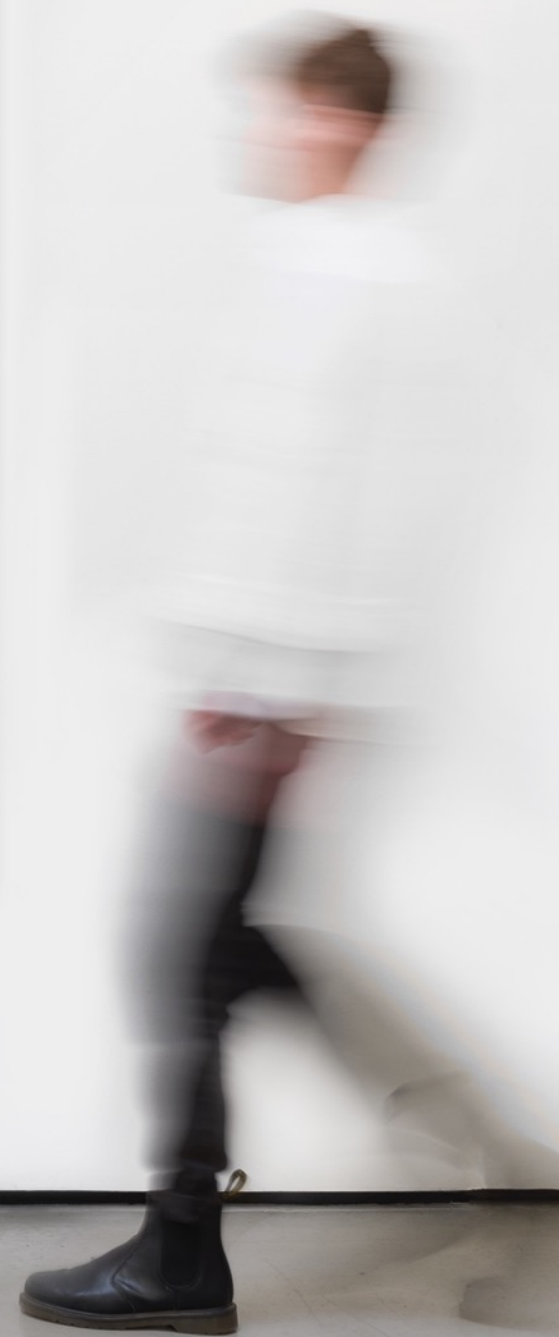


**Kenrick McFarlane**  
*A Love Letter to Travis II*, 2023  
(detail)





**Kenrick McFarlane** | *The Escapist*, 2023 | oil on canvas  
72 x 60 inches (182.9 x 152.4 cm) | (KMCF.23.009.72)







Kenrick McFarlane  
*The Escapist*, 2023  
(detail)





**Kenrick McFarlane** | *Self Realization*, 2023 | oil on canvas  
72 x 48 inches (182.9 x 121.9 cm) | (KMCF.23.012.72)





**Kenrick McFarlane**  
*Self Realization*, 2023  
(detail)





**Kenrick McFarlane** | *The Opening*, 2023 | oil on canvas  
72 x 48 inches (182.9 x 121.9 cm) | (KMCF.23.014.72)





**Kenrick McFarlane**  
*The Opening*, 2023  
(detail)





**Kenrick McFarlane** | *Majora's Mask*, 2023 | oil on canvas  
72 x 48 inches (182.9 x 121.9 cm) | (KMCF.23.013.72)





**Kenrick McFarlane**  
*Majora's Mask*, 2023  
(detail)