

M+B

KRISTOF SANTY
Perfect Days

September 20 – October 25, 2025

612 NORTH ALMONT DRIVE, LOS ANGELES, CA 90069

TEL 310 550 0050

WWW.MBART.COM

INFO@MBART.COM

@MBLOSANGELES



KRISTOF SANTY

Perfect Days

M+B is pleased to present *Perfect Days*, an exhibition of new work by Kristof Santy. This marks Santy's third solo presentation with the gallery. The exhibition opens on Saturday, September 20 with an opening reception at the gallery from 5 to 8 pm.

In *Perfect Days*, Kristof Santy expands his universe of flattened interiors, stylized gastronomy, and folkloric gestures, delivering a wry and affectionate catalogue of life's minutiae. Borrowing its title from Wim Wenders' 2023 film—an ode to repetition and routine—the exhibition continues Santy's interest in figures and objects shaped by the daily rhythms of work, solitude, and observation. As in his earlier show *Hermit* (Casa MB, Milan, 2024), Santy remains tethered to the tasks that structure domestic space, but here, a quiet sociability emerges. The world is still structured by habit, but now the artist seems to peek over the hedges.

Rendered in Santy's signature flat style—clean lines, bold silhouettes, and saturated palettes—*Perfect Days* is populated by icons of the familiar: hamburgers, ketchup bottles, pencils. They are studied, almost affectionate renderings that hover between illustration and memory. The works favor stillness over spectacle, repetition over climax. Their power lies in precision, restraint, and Santy's ability to elevate without embellishment.

As in *Hermit*, Santy draws on his archive of observational drawings—small-scale, wax-and-pencil studies of tools, plugs, or glassware—which form a kind of design language underpinning his larger canvases. These sketches appear here, not as preparatory fragments, but as equal counterparts, reinforcing the artist's commitment to distilling form without diluting meaning.

Wenders' film quietly celebrates the dignity of unremarkable days, and Santy's paintings do much the same. But where Wenders works in cinematic time, Santy compresses and stills. His subjects are caught in an eternal noon—unmoving but never static. They insist on presence through repetition, clarity, and use. If Santy's paintings suggest narrative, it is one built slowly, one clean surface at a time.

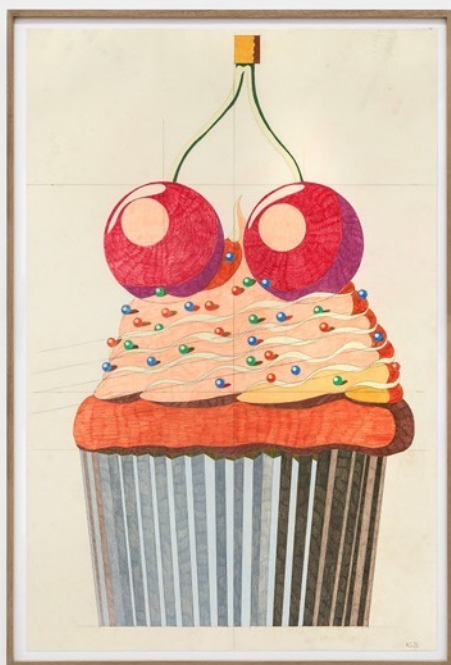
With *Perfect Days*, Santy continues to argue—convincingly—that the ordinary is enough. That attention, not grandeur, is the point. And that painting, when approached with consistency and care, can make even a bottle of ketchup feel like a fully formed character.

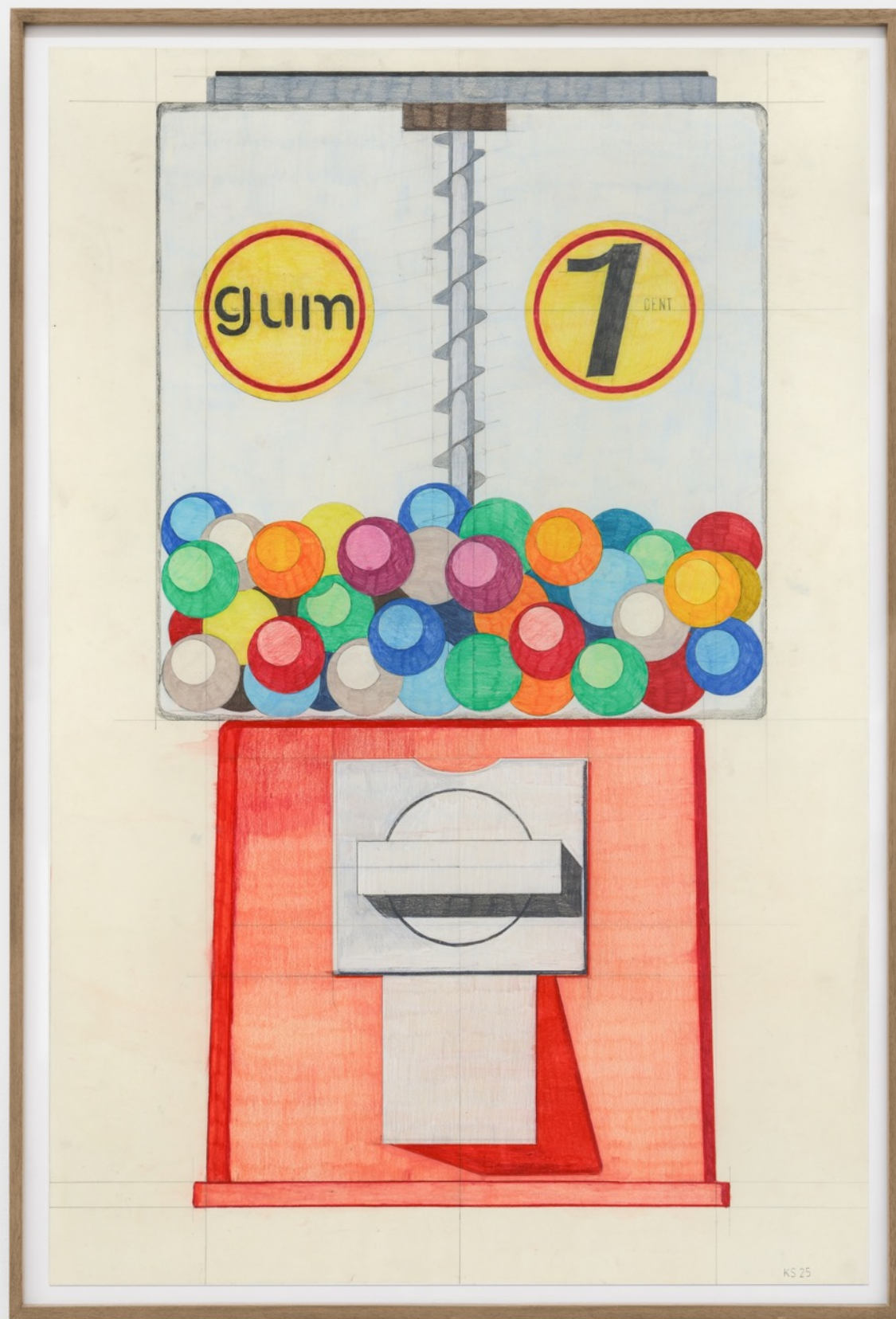


KRISTOF SANTY

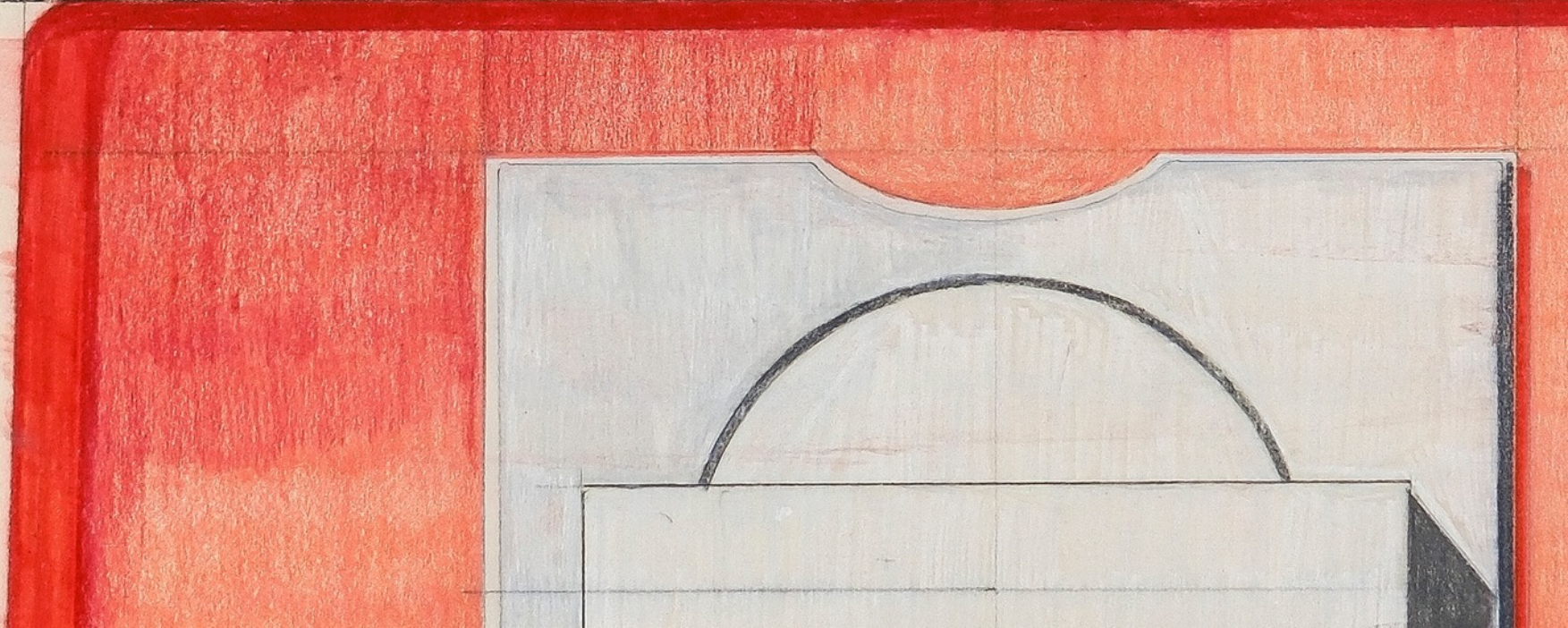
Kristof Santy's stylized paintings of interiors, still lifes, landscapes, gastronomy, and folklore elevates the everyday domestic into the venerated. Always in reverence of his subjects, he captures them in detailed, vividly color-blocked compositions with his trademark flatness. By focusing on the subject, rather than narrative, he creates a sympathetic portrait that anthropomorphizes the otherwise commonplace. In humanizing his subject, a bond is formed between the painting and viewer that stirs feelings of nostalgia and the comfort of home.

Kristof Santy's (b. 1987, Belgium) recent solo exhibitions include Hermit, Casa MB, Milan, Italy; Epinal and Icon, Christine König Galerie, Vienna, Austria; Playtime, Sorry We're Closed, Brussels, Belgium; Bric-à-Brac, Ter Posterie, Roeselare, Belgium; Home Sweet Home, M+B, Los Angeles; and La Grande Bouffe and Platform, Unit, London, UK. His work has been included in group exhibitions at SMAK (The Stedelijk Museum voor Actuele Kunst), Gent, Belgium; ABBY Museum, Kortrijk, Belgium; Stedelijk Museum, Hoogstraten Belgium; Trotoar Gallery, Croatia; Belfius Art Collection, Belgium; and Mu.ZEE, Ostend, Belgium. Next year his work will have a solo show and book launch at Sorry We're Closed in Brussels, Belgium. Later this year, he will also be featured in the group exhibition Trans Europe Express at Kunsthaus NRW in Aachen, Germany. Kristof Santy lives and works in Roeselare, Belgium.



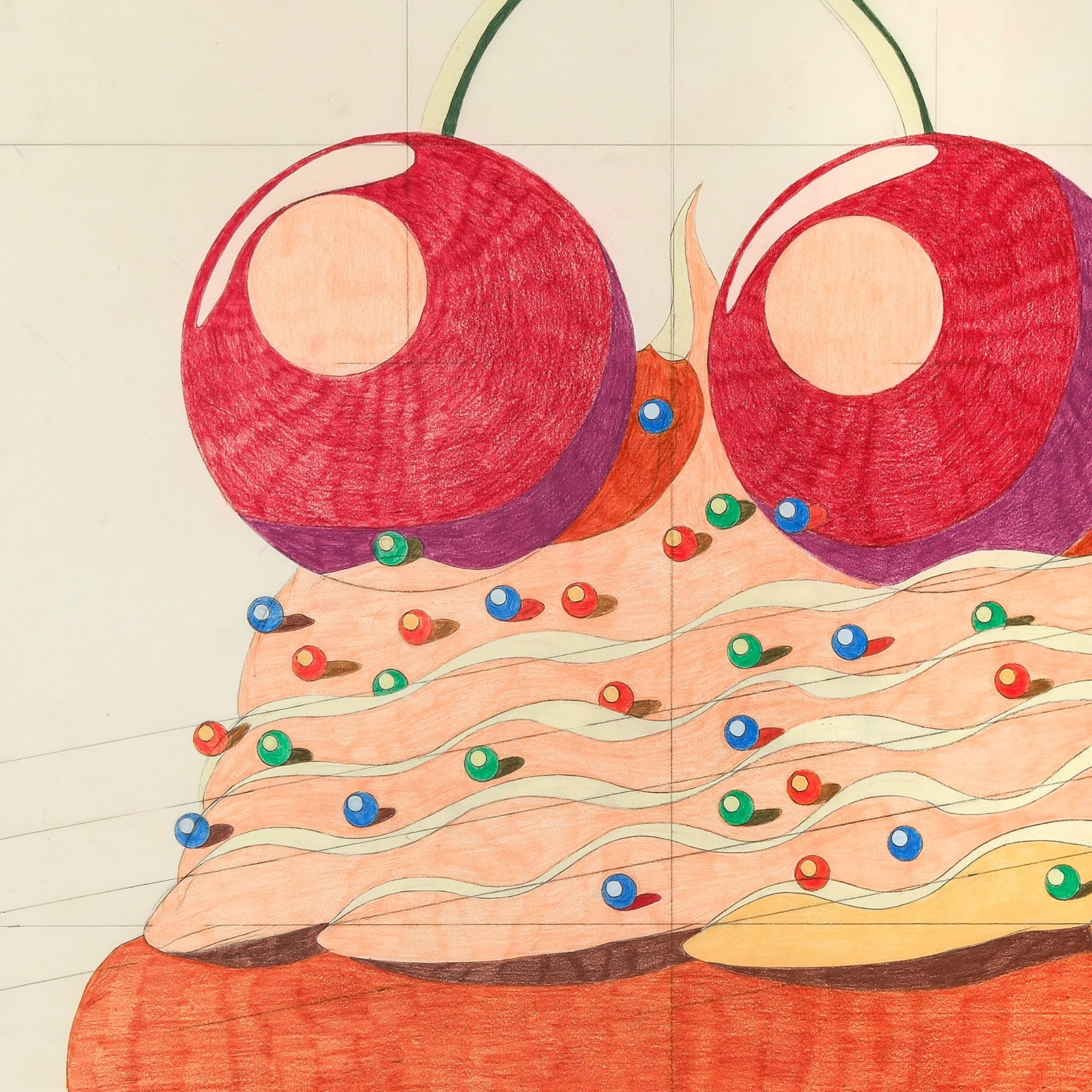


Kristof Santy | *Cours de Dessin, Serie 2 #19, 2025*
pencil and wax on 130 gram simili japon paper | 37 3/4 x 25 1/4 inches (96 x 64.2 cm)





Kristof Santy | *Cours de Dessin, Serie 2 #16*, 2025
pencil and wax on 130 gram simili japon paper | 37 3/4 x 25 1/4 inches (96 x 64.2 cm)





Kristof Santy | *Cours de Dessin, Serie 2 #17, 2025*
pencil and wax on 130 gram simili japon paper | 37 3/4 x 25 1/4 inches (96 x 64.2 cm)





Kristof Santy | *Hamburger met roze limonade*, 2025
oil on canvas in artist frame | 70 7/8 x 63 inches (180 x 160 cm)





Kristof Santy | *Ketchup*, 2025
oil on canvas in artist frame | 47 1/4 x 19 3/4 inches (120 x 50 cm)





Kristof Santy | *Dubbele hamburger*, 2025
oil on canvas in artist frame | 47 1/4 x 39 3/8 inches (120 x 100 cm)





Kristof Santy | *Speen 1*, 2025
oil on canvas in artist frame | 15 3/4 x 11 3/4 inches (40 x 30 cm)



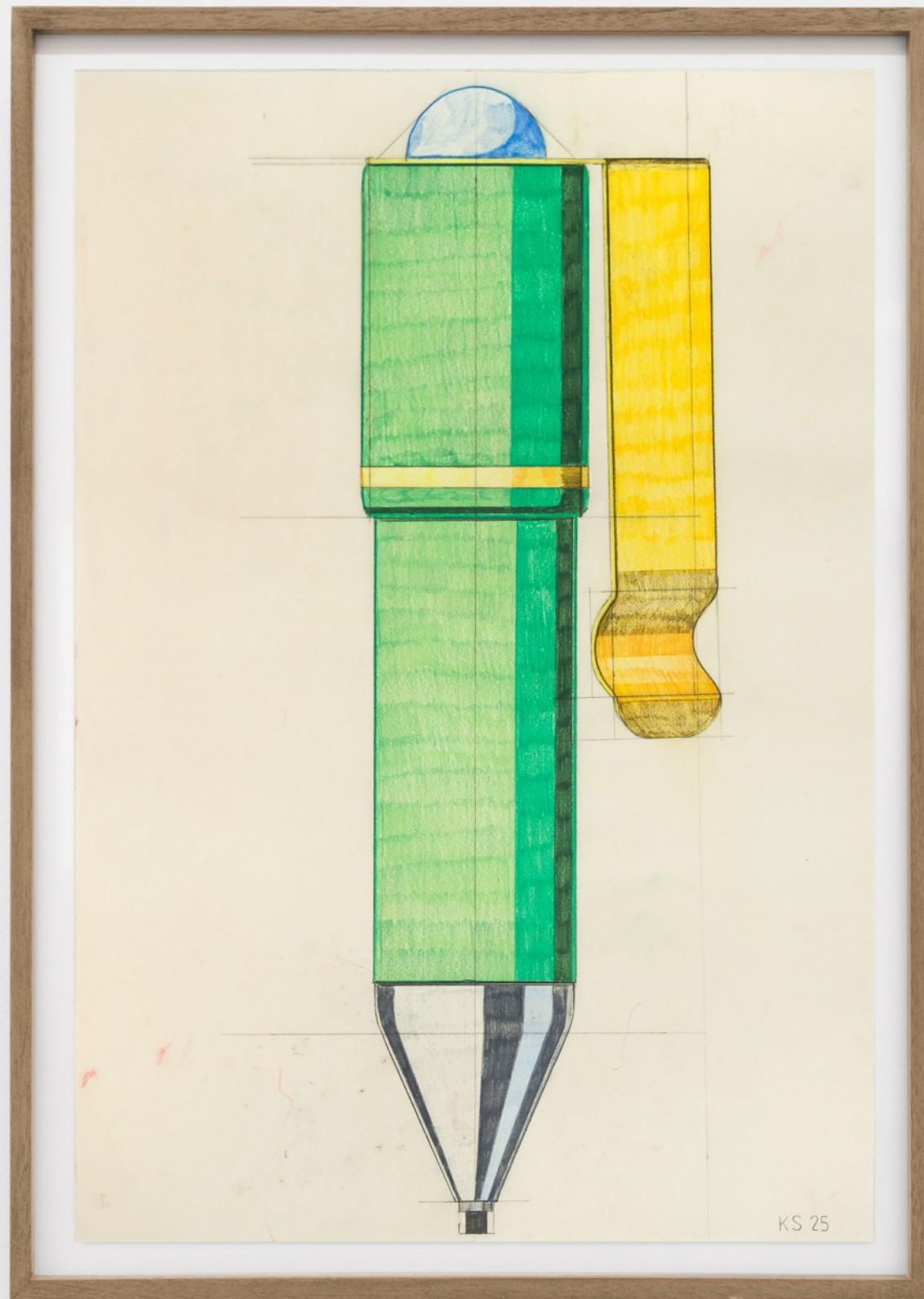
Kristof Santy | *Crème glace*, 2025
oil on canvas in artist frame | 59 x 47 1/4 inches (150 x 120 cm)



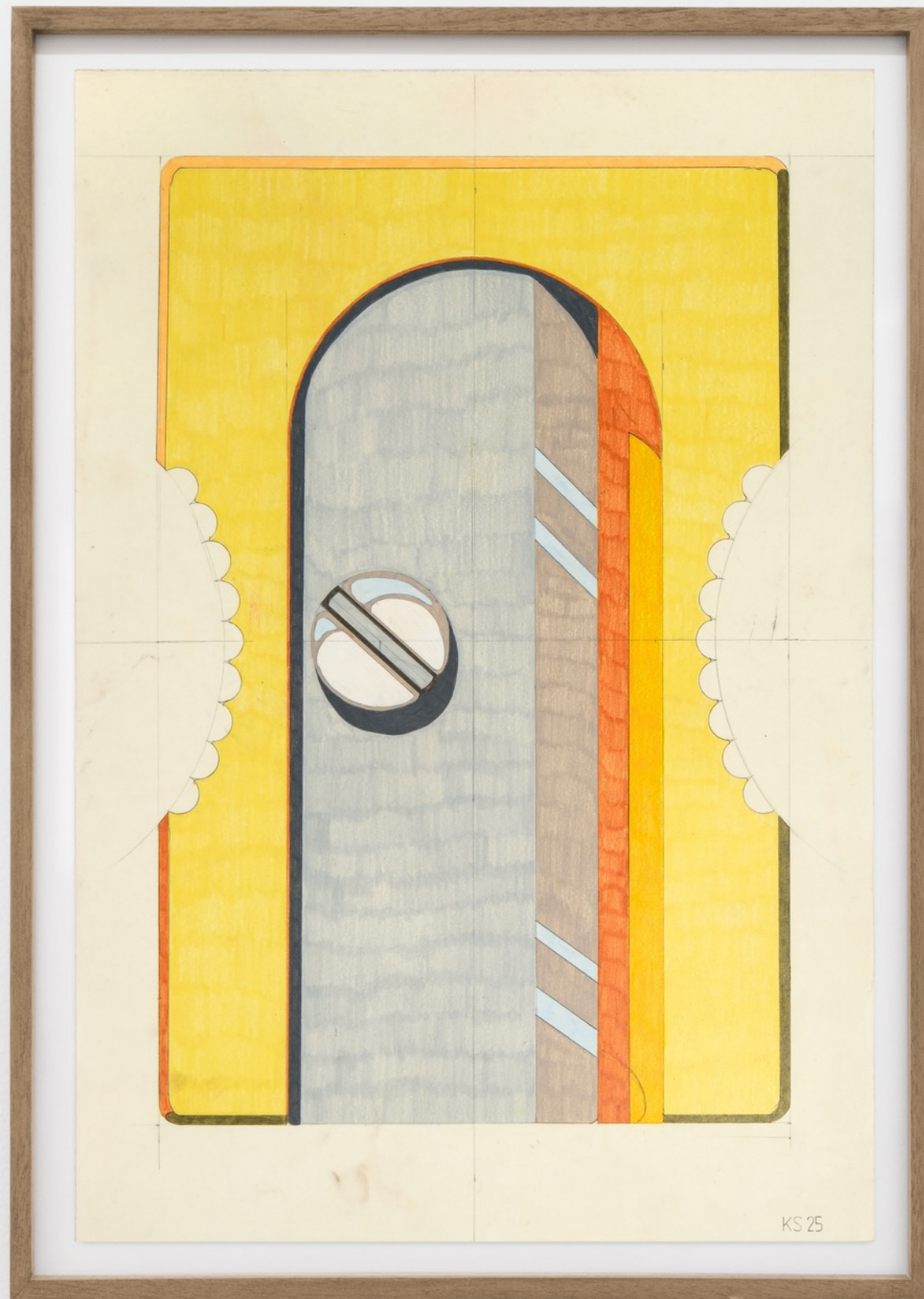


Kristof Santy | *Cours de Dessin #107, 2024*
pencil and wax on 130 gram simili japon paper | 22 x 15 inches (56 x 38 cm)

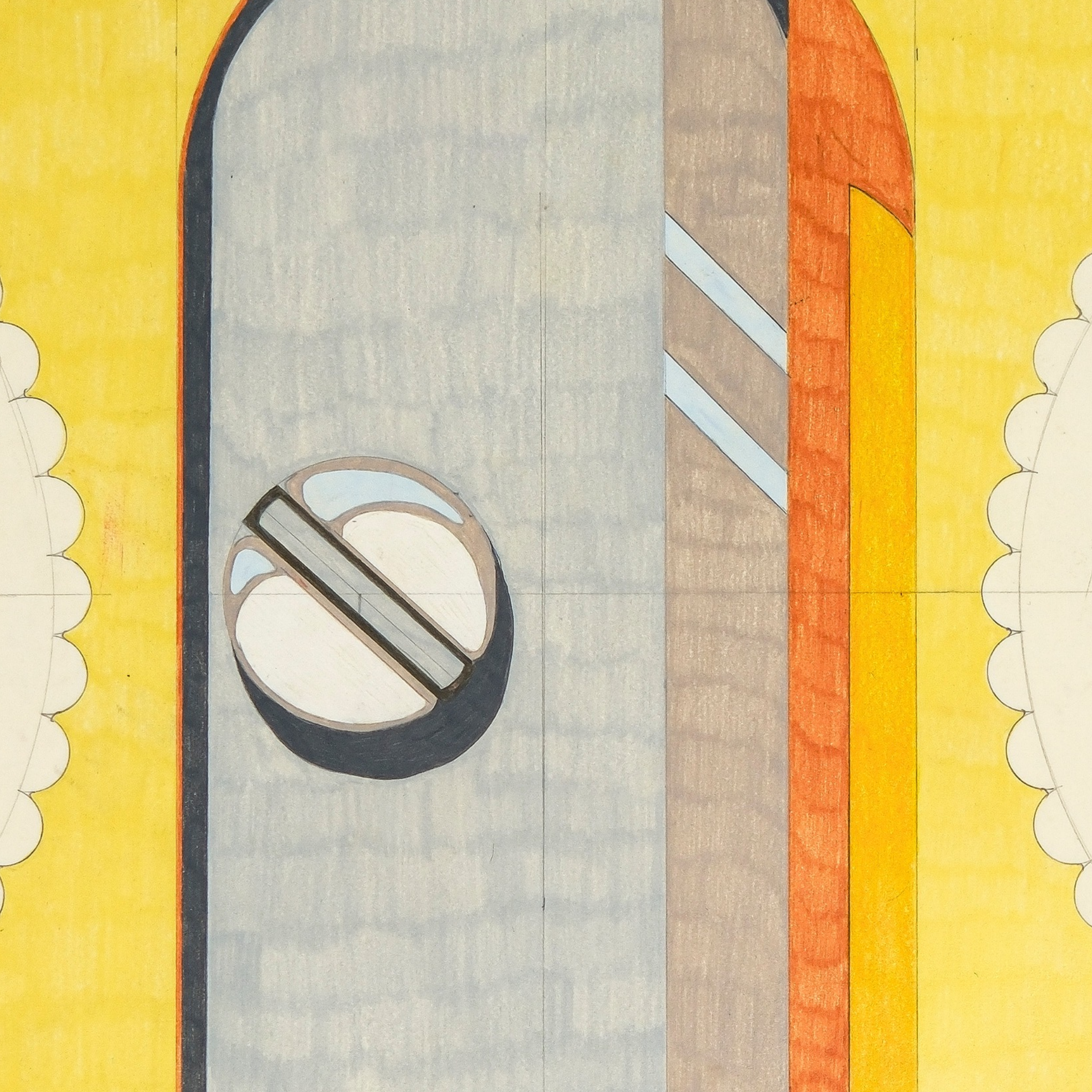




Kristof Santy | *Cours de Dessin #148, 2025*
pencil and wax on 130 gram simili japon paper | 22 x 15 inches (56 x 38 cm)



Kristof Santy | *Cours de Dessin #134*, 2025
pencil and wax on 130 gram simili japon paper | 22 x 15 inches (56 x 38 cm)





Kristof Santy | *Cours de Dessin #114*, 2025
pencil and wax on 130 gram simili japon paper | 22 x 15 inches (56 x 38 cm)



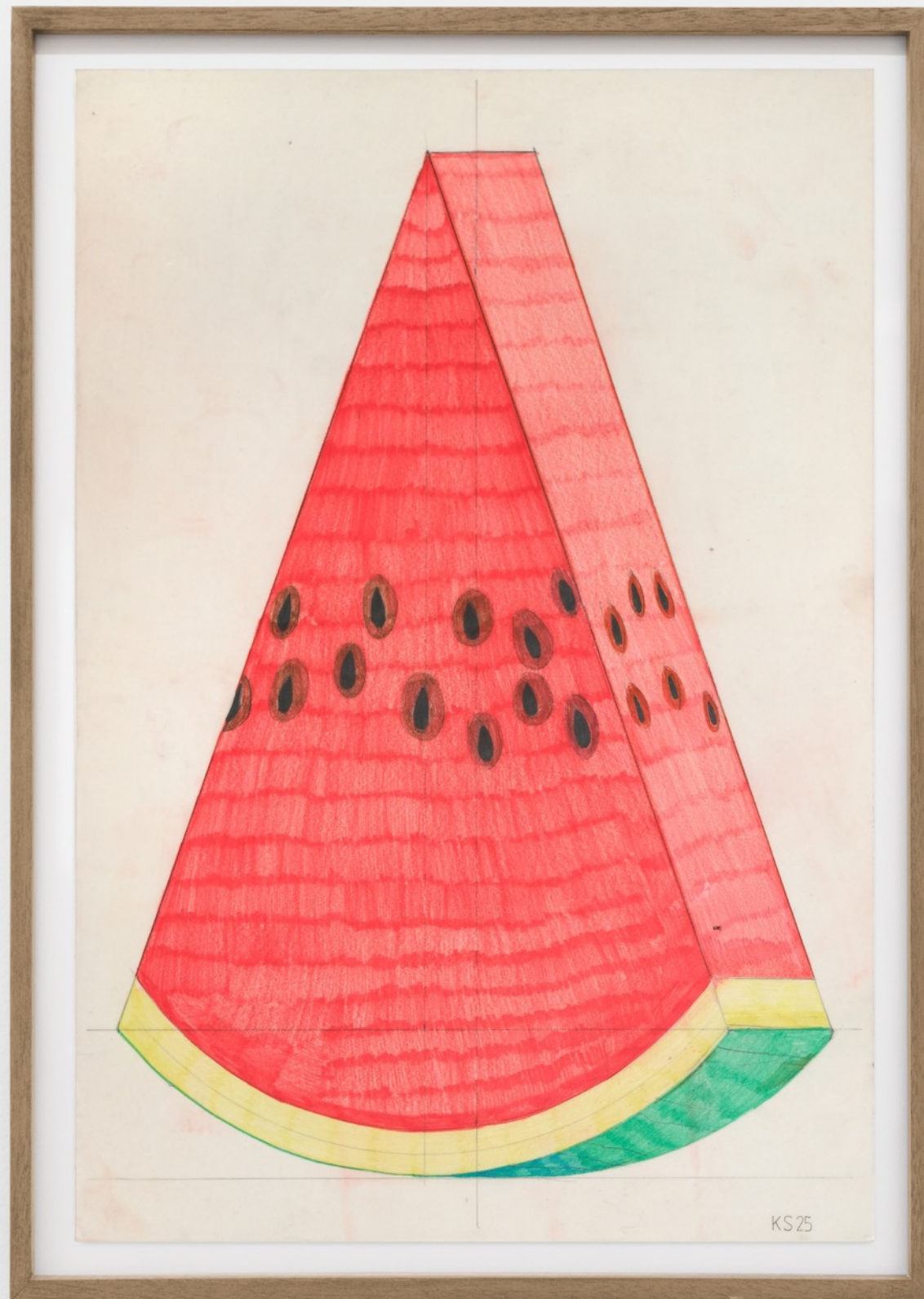
Kristof Santy | *Cours de Dessin #140*, 2025
pencil and wax on 130 gram simili japon paper | 22 x 15 inches (56 x 38 cm)





Kristof Santy | *Cours de Dessin #118, 2025*
pencil and wax on 130 gram simili japon paper | 22 x 15 inches (56 x 38 cm)

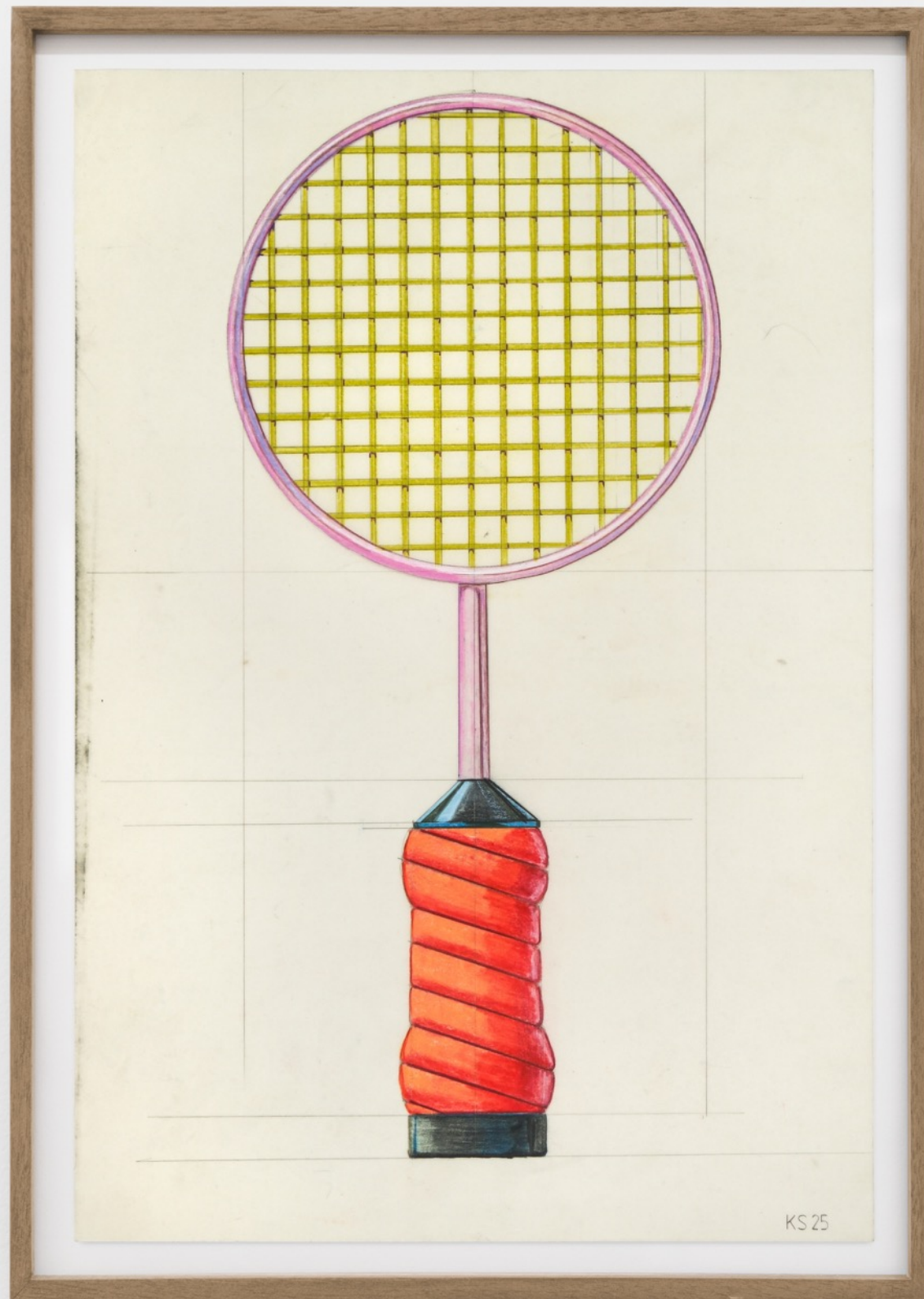




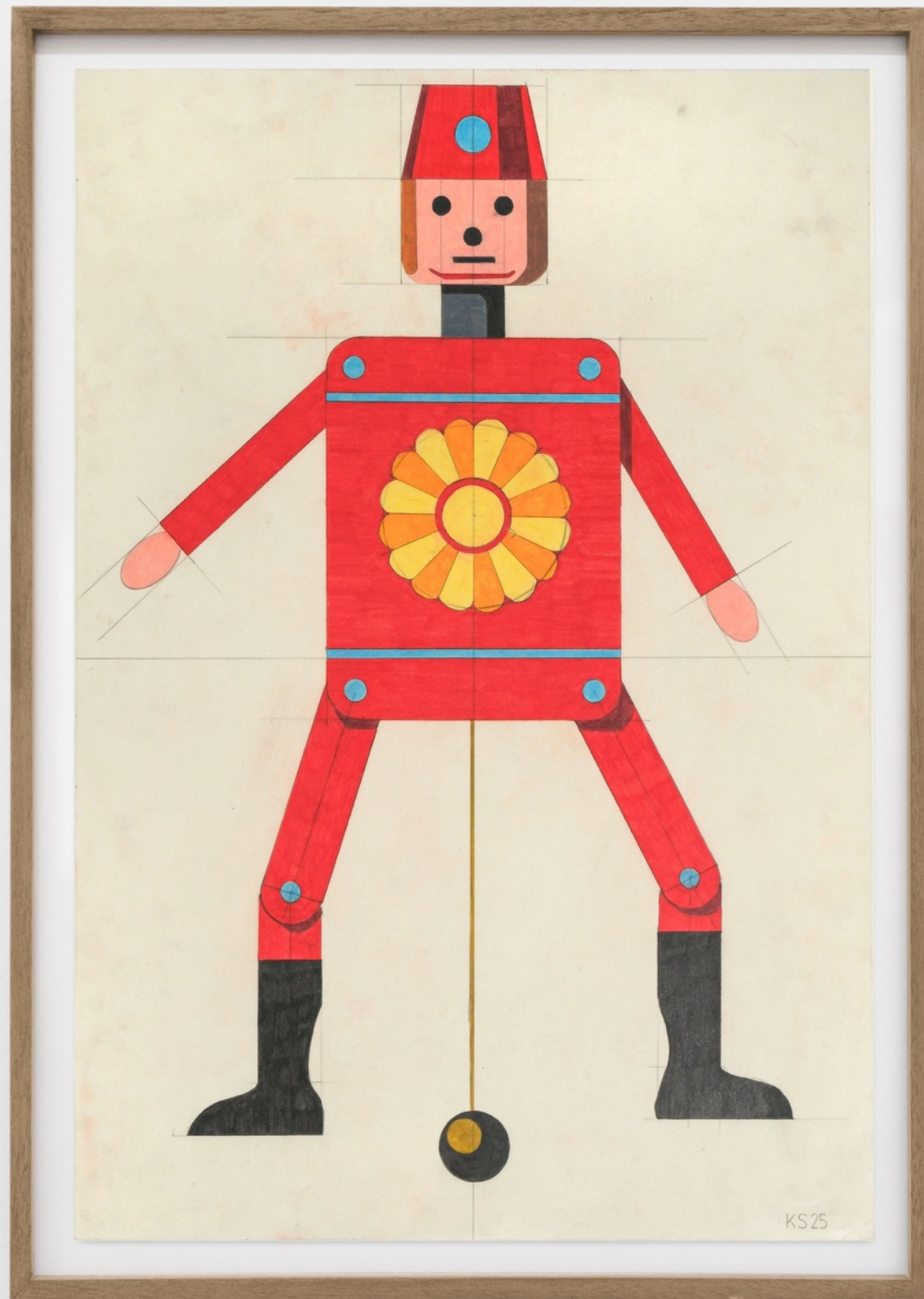
Kristof Santy | *Cours de Dessin #131*, 2025
pencil and wax on 130 gram simili japon paper | 22 x 15 inches (56 x 38 cm)



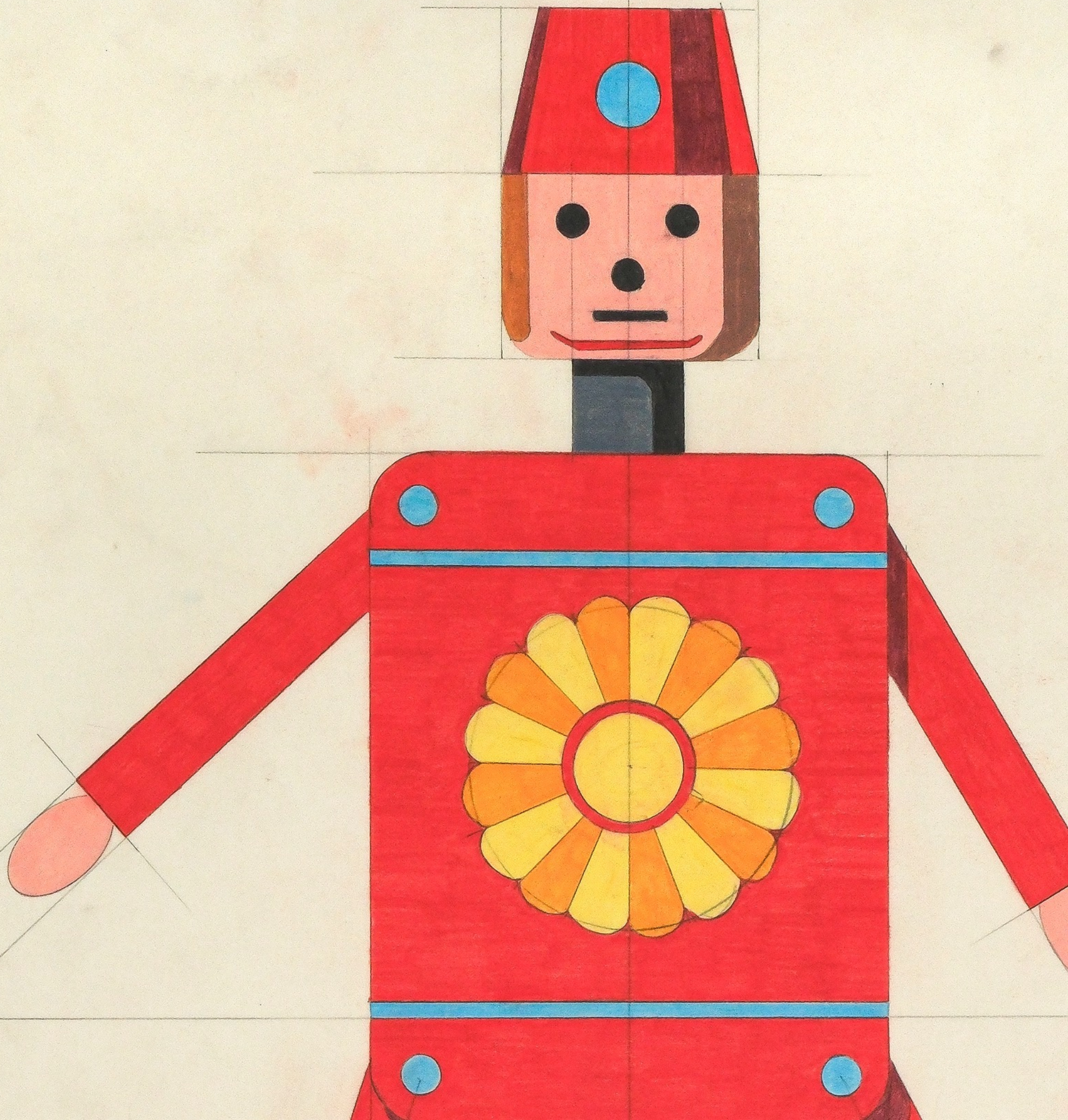
Kristof Santy | *Cours de Dessin #139, 2025*
pencil and wax on 130 gram simili japon paper | 22 x 15 inches (56 x 38 cm)



Kristof Santy | *Cours de Dessin #119, 2025*
pencil and wax on 130 gram simili japon paper | 22 x 15 inches (56 x 38 cm)

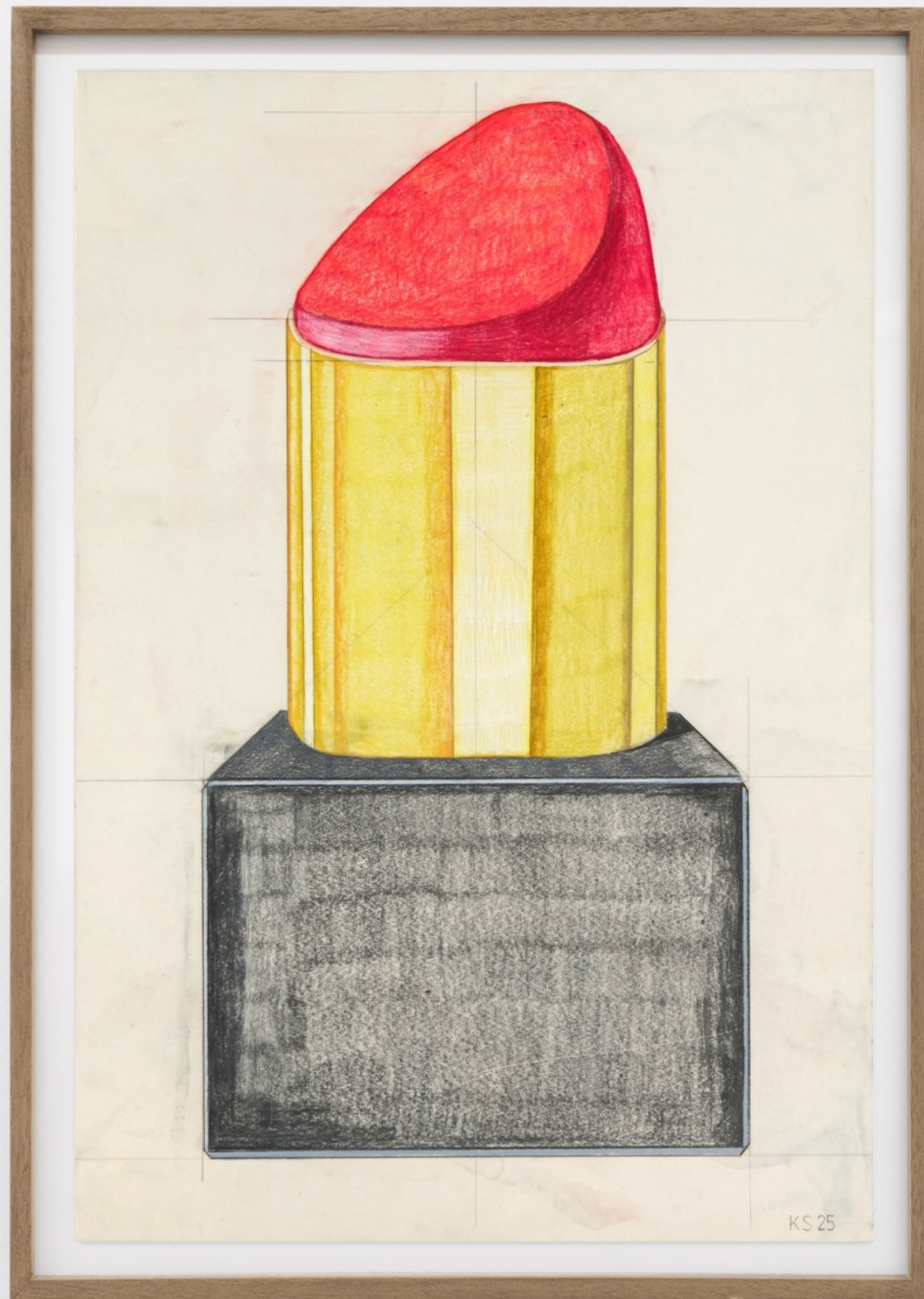


Kristof Santy | *Cours de Dessin #136, 2025*
pencil and wax on 130 gram simili japon paper | 22 x 15 inches (56 x 38 cm)





Kristof Santy | *Cours de Dessin #127, 2025*
pencil and wax on 130 gram simili japon paper | 22 x 15 inches (56 x 38 cm)



Kristof Santy | *Cours de Dessin #128, 2025*
pencil and wax on 130 gram simili japon paper | 22 x 15 inches (56 x 38 cm)