



**SUNG HWA KIM**  
***NOCTURNE***

March 4 - 16, 2021





## SUNG HWA KIM

**M+B** is pleased to present new paintings by New York based artist, Sung Hwa Kim. The artist's *Nocturne* series is based on his experiences of late night bike rides through the city during the pandemic. These contemplative nighttime pictures depict tonal views of the skyward gaze, often capturing moments of light breaking through darkness.

*At the start of the pandemic, the absence of human interaction and the collective uncertainty about the future incited feelings of anxiety and fear. Like many artists, I found the act of creation challenging. There was something shameful about being in my studio while all over the city, all over the world, people were suffering. I started taking long, late-night bike rides to escape both my thoughts and worries and New York City's crowded streets and subways.*

*The "Nocturne" series captures the particular scenes, emotions, and images that I experienced while on my nightly excursions. I found that under the cover of darkness, light appeared brighter. Moving through the night was like navigating through the uncertainty of our current moment.*

— Sung Hwa Kim

Sung Hwa Kim (b. 1985, Seoul, South Korea) received his MFA at the Maryland Institute College of Art and his BFA from The Art Institute of Boston. Recent thematic exhibitions include *RECLAIMING, REIMAGINING*, Field Projects, New York, NY; *The Edge Effect*, curated by Akili Tommasino, The Katonah Museum of Art, Katonah, NY; and *COLOR*, curated by Jocelyn Miller, Brooklyn Waterfront Artists Coalition, Brooklyn, NY. Sung Hwa Kim lives and works in New York City.

**M+B**

**Sung Hwa Kim**

*Nocturne: Last days, endless monsoon, 2020*

acrylic on canvas

40 x 26 inches (101.6 x 66 cm)

(SK.20.006.40)



**M+B**

**Sung Hwa Kim**

*Nocturne: I keep riding. All that space between  
where we stand. I just keep riding and riding, 2021*

acrylic on canvas

24 x 18 inches (61 x 45.7 cm)

(SK.21.006.24)



**M+B**

**Sung Hwa Kim**

*Nocturne: Waiting for morning to arrive like a new era, 2020*

acrylic on canvas

58 x 42 inches (147.3 x 106.7 cm)

(SK.20.001.58)



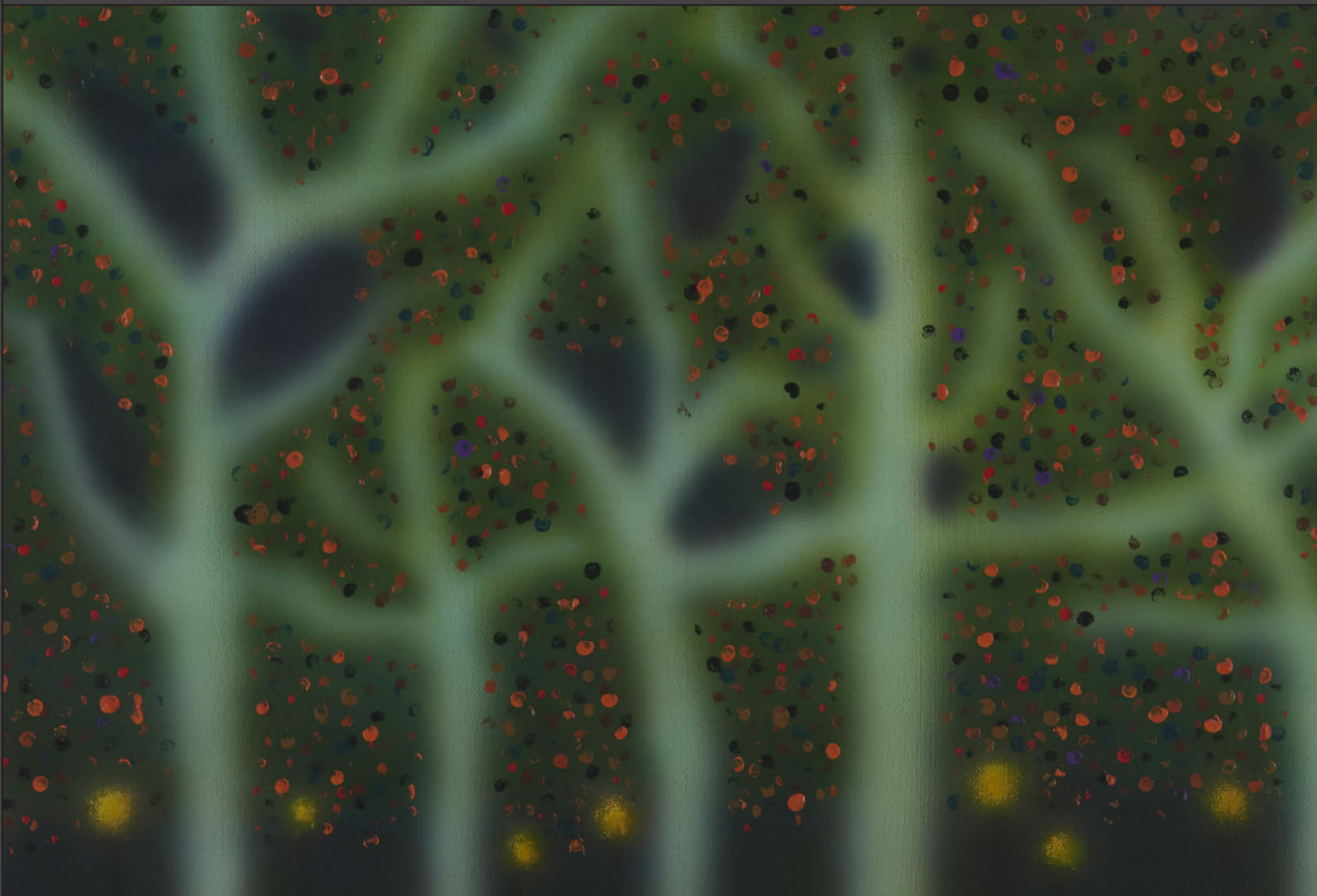
**M+B**



**Sung Hwa Kim**

*Nocturne: Night after night, I'm about to write another line of my confession, 2021*  
acrylic and gouache on canvas  
24 x 18 inches (61 x 45.7 cm)  
(SK.21.004.24)





**Sung Hwa Kim**

*Nocturne: Night after night, I'm about to write another line of my confession, 2021*  
(detail)

**M+B**

**Sung Hwa Kim**

*Nocturne: This love will keep us through  
blinding of the eyes, silence in the ears,  
and darkness of the mind until it's time, 2020*

acrylic on canvas

36 x 30 inches (91.4 x 76.2 cm)

(SK.20.005.36)





**M+B**

**Sung Hwa Kim**

*Nocturne: Tonight, I'll send you the firefly  
from that day to near your window, 2020*

acrylic on canvas

56 x 32 inches (142.2 x 81.3 cm)

(SK.20.004.56)



**M+B**

**Sung Hwa Kim**

*Nocturne: the sun, the moon,  
and the truth cannot be long hidden, 2020*

acrylic on canvas

24 x 18 inches (61 x 45.7 cm)

(SK.20.002.24)



**M+B**



**Sung Hwa Kim**

*Nocturne: Sometimes dreams remind,  
Some dreams rewind time II, 2021*  
acrylic and gouache on canvas  
30 x 24 inches (76.2 x 61 cm)  
(SK.21.001.30)





**Sung Hwa Kim**

*Nocturne: Sometimes dreams remind, Some dreams rewind time II, 2021*  
(detail)



**M+B**

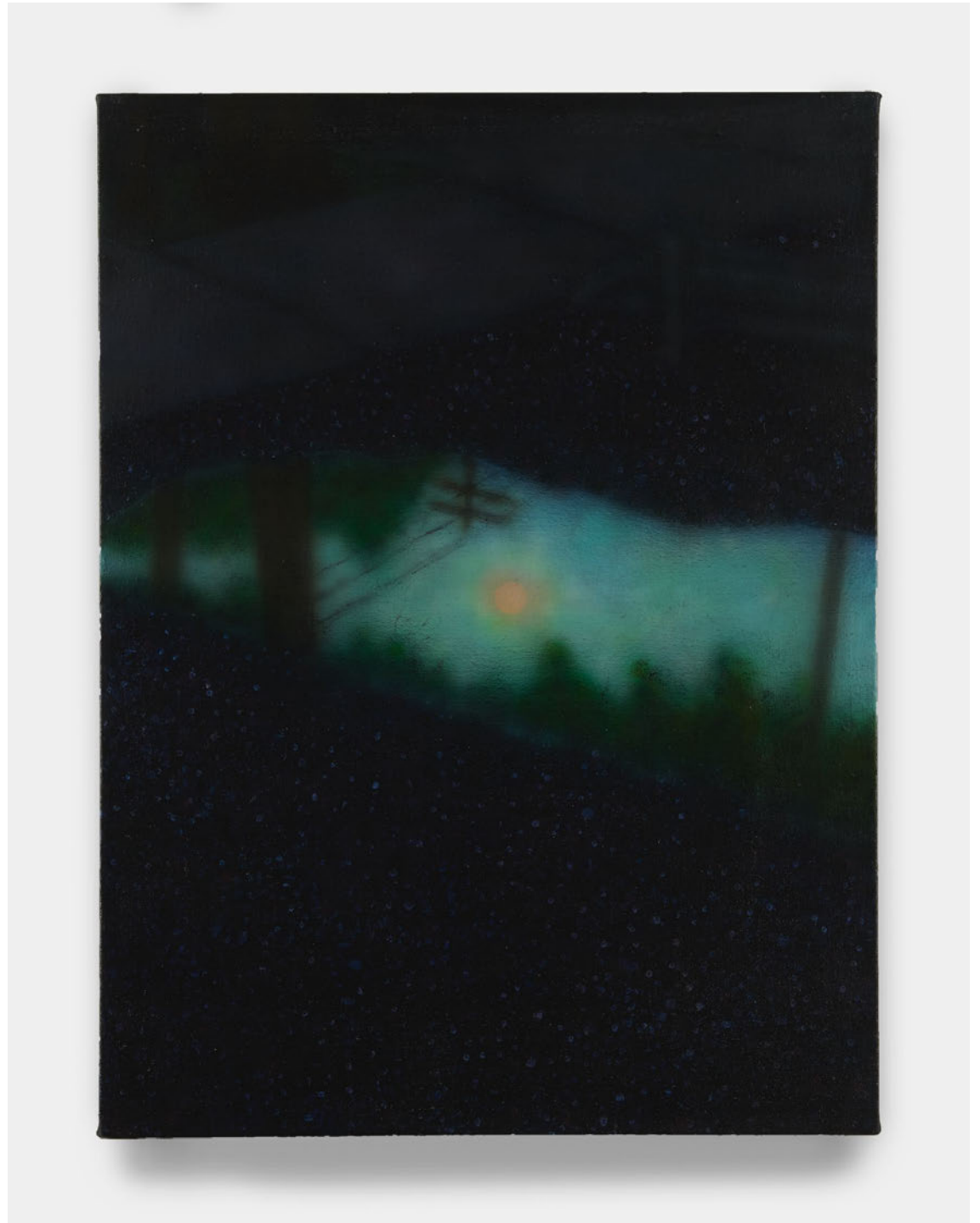
**Sung Hwa Kim**

*Nocturne: After rain, I saw a puddle  
of hope remains on the sidewalk, 2021*

acrylic on canvas

24 x 18 inches (61 x 45.7 cm)

(SK.21.005.24)



**M+B**



**Sung Hwa Kim**

*Nocturne: Mother, let me say a beautiful  
word for every star I count, 2020*

acrylic on canvas

24 x 18 inches (61 x 45.7 cm)

(SK.20.003.24)



**M+B**



**Sung Hwa Kim**

*Nocturne: And we follow the night looking for the light, 2021*

acrylic on canvas

24 x 18 inches (61 x 45.7 cm)

(SK.21.008.24)



**Sung Hwa Kim**

*Nocturne: And we follow the night looking for the light, 2021*  
(detail)

**M+B**

**Sung Hwa Kim**

*Nocturne: One strange night,  
one too many claws, one weird ass painting*, 2021  
acrylic and gouache on canvas  
24 x 18 inches (61 x 45.7 cm)  
(SK.21.007.24)





**M+B**

**Sung Hwa Kim**

*Nocturne: Watching all the fire as they burn, 2021*

acrylic and gouache on canvas

24 x 18 inches (61 x 45.7 cm)

(SK.21.002.24)



**M+B**



**Sung Hwa Kim**

*Nocturne: When it dawns, tomorrow comes, 2021*

acrylic and gouache on canvas

20 x 16 inches (50.8 x 40.6 cm)

(SK.21.003.20)



## SUNG HWA KIM

**BORN** 1985, Seoul, South Korea

### EDUCATION

2012 M.F.A, Maryland Institute College of Art, Baltimore, MD

2008 B.F.A., The Art Institute of Boston, Boston, MA

### SELECTED GROUP EXHIBITIONS

- 2020 *RECLAIMING, REIMAGINING*: Online Exhibition, Field Projects, New York, NY  
*Congruency*, The Gallery; Prato Capital Management, White Plains, NY
- 2019 *COLOR*, curated by Jocelyn Miller, Brooklyn Waterfront Artists Coalition, Brooklyn, NY  
*The Edge Effect*, curated by Akili Tommasino, The Katonah Museum of Art, Katonah, NY  
*Crocodile Tears*, curated by YNGSPC, Morgan Fine Arts Building, Brooklyn, NY
- 2018 *Juxtapositions*, The Painting Center, Chelsea, NY
- 2013 *The Trip*, Loft 594, Brooklyn, NY  
*Sondheim Semi-Finalist Exhibition*, Baltimore, MD  
*Smörgåsbord*, curated by Paddy Johnson, Gallery CA, Baltimore, MD
- 2012 *Vestige*, North Market Space, Baltimore MD  
*The Great White*, Gallery 500, Baltimore, MD
- 2011 *New Work*, Gallery die Botschaft: Art & Culture, Baltimore, MD

### AWARDS AND HONORS

- 2013 Janet and Walter Sondheim Prize semi-finalist. Baltimore, MD
- 2012 Artist Residency, Windy Mowing Painting Residency, Halifax, VT  
Graduate Student Merit Scholarship, MICA, Baltimore, MD
- 2008 Best of Fine Arts in 2-d, The Art Institute of Boston, MA

### PUBLICATIONS

- 2020 *Art Maze Magazine Issue 20*
- 2018 *Art Maze Magazine Anniversary Issue 10*  
*Friend of The Artist Magazine Vol. 6*