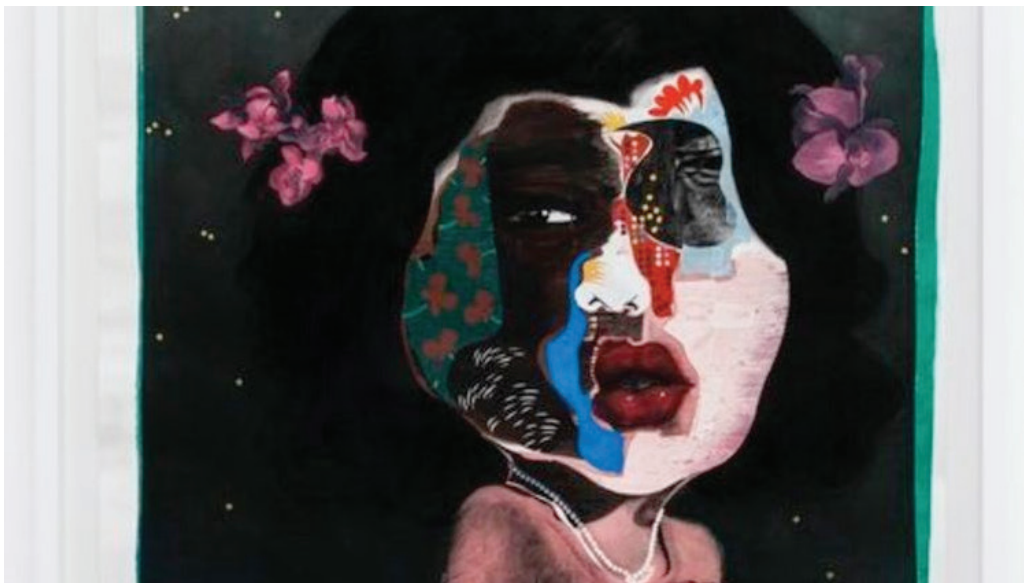


M+B



Nathaniel Mary Quinn: Past/Present

September 8, 2014



The large paper works of Nathaniel Mary Quinn are driven by past personal experiences

Akin to grotesquely beautiful manifestations of profound inner visions, the large paper works of Nathaniel Mary Quinn are driven by past personal experiences, from losing his mother as a child to being abruptly abandoned by his father and brothers. Using whatever means necessary to express his visions, he brings together images from photographs, advertisements, as well as combining numerous types of media such as black charcoal, oil paint, gouache, and more. The key piece on display is Diane, an assembled portrait with fragmented facial features not unlike works of Synthetic Cubism, and inspired by the memory of the woman who informed him of his family's departure.